

---

GemStone®

# *GemBuilder® for Java™* *Installation Guide*

Version 3.1.1

April 2014



GEMTALK™  
SYSTEMS

GEMSTONE S™  
64



## INTELLECTUAL PROPERTY OWNERSHIP

This documentation is furnished for informational use only and is subject to change without notice. GemTalk Systems, LLC, assumes no responsibility or liability for any errors or inaccuracies that may appear in this documentation.

This documentation, or any part of it, may not be reproduced, displayed, photocopied, transmitted, or otherwise copied in any form or by any means now known or later developed, such as electronic, optical, or mechanical means, without express written authorization from GemTalk Systems.

Warning: This computer program and its documentation are protected by copyright law and international treaties. Any unauthorized copying or distribution of this program, its documentation, or any portion of it, may result in severe civil and criminal penalties, and will be prosecuted under the maximum extent possible under the law.

The software installed in accordance with this documentation is copyrighted and licensed by GemTalk Systems under separate license agreement. This software may only be used pursuant to the terms and conditions of such license agreement. Any other use may be a violation of law.

Use, duplication, or disclosure by the Government is subject to restrictions set forth in the Commercial Software - Restricted Rights clause at 52.227-19 of the Federal Acquisitions Regulations (48 CFR 52.227-19) except that the government agency shall not have the right to disclose this software to support service contractors or their subcontractors without the prior written consent of GemTalk Systems.

This software is provided by GemTalk Systems, LLC and contributors "as is" and any expressed or implied warranties, including, but not limited to, the implied warranties of merchantability and fitness for a particular purpose are disclaimed. In no event shall GemTalk Systems, LLC or any contributors be liable for any direct, indirect, incidental, special, exemplary, or consequential damages (including, but not limited to, procurement of substitute goods or services; loss of use, data, or profits; or business interruption) however caused and on any theory of liability, whether in contract, strict liability, or tort (including negligence or otherwise) arising in any way out of the use of this software, even if advised of the possibility of such damage.

## COPYRIGHTS

This software product, its documentation, and its user interface © 1986-2014 GemTalk Systems, LLC. All rights reserved by GemTalk Systems.

## PATENTS

GemStone software is covered by U.S. Patent Number 6,256,637 "Transactional virtual machine architecture", Patent Number 6,360,219 "Object queues with concurrent updating", Patent Number 6,567,905 "Generational garbage collector with persistent object cache", and Patent Number 6,681,226 "Selective pessimistic locking for a concurrently updateable database". GemStone software may also be covered by one or more pending United States patent applications.

## TRADEMARKS

**VMware** is a registered trademark or trademark of VMware, Inc. in the United States and/or other jurisdictions.

**GemStone**, **GemBuilder**, **GemConnect**, and the GemStone logos are trademarks or registered trademarks of GemTalk Systems, LLC, or of VMware, Inc., previously of GemStone Systems, Inc., in the United States and other countries.

**UNIX** is a registered trademark of The Open Group in the United States and other countries.

**Sun**, **Sun Microsystems**, and **Solaris** are trademarks or registered trademarks of Oracle and/or its affiliates. **SPARC** is a registered trademark of SPARC International, Inc.

**HP**, **HP Integrity**, and **HP-UX** are registered trademarks of Hewlett Packard Company.

**Intel**, **Pentium**, and **Itanium** are registered trademarks of Intel Corporation in the United States and other countries.

**Microsoft**, **MS**, **Windows**, **Windows XP**, **Windows 2003**, **Windows 7**, **Windows Vista** and **Windows 2008** are registered trademarks of Microsoft Corporation in the United States and other countries.

**Linux** is a registered trademark of Linus Torvalds and others.

**Red Hat** and all Red Hat-based trademarks and logos are trademarks or registered trademarks of Red Hat, Inc. in the United States and other countries.

**SUSE** is a registered trademark of Novell, Inc. in the United States and other countries.

**AIX**, **POWER5**, **POWER6**, and **POWER7** are trademarks or registered trademarks of International Business Machines Corporation.

**Apple**, **Mac**, **Mac OS**, **Macintosh**, and **Snow Leopard** are trademarks of Apple Inc., in the United States and other countries.

Other company or product names mentioned herein may be trademarks or registered trademarks of their respective owners. Trademark specifications are subject to change without notice. GemTalk Systems cannot attest to the accuracy of all trademark information. Use of a term in this documentation should not be regarded as affecting the validity of any trademark or service mark.

### GemTalk Systems

15220 NW Greenbrier Parkway  
Suite 240  
Beaverton, OR 97006

### About This Documentation

This document provides instructions for installing GemBuilder® for Java™ version 3.1.1. You should read through this document before beginning installation or upgrade.

Please also read through the changes in this release, which are described in the *GemBuilder for Java Release Notes* for version 3.1.1.

These documents are available on the GemTalk support website, as described below.

### Other Useful Documents

- ▶ The *Javadocs* that are provided with the GemBuilder for Java product distribution are a key source of up-to-date information on GemBuilder for Java functionality.
- ▶ *GemBuilder for Java Tools Guide* describes the independent set of tools that let you explore and modify Smalltalk code in the server.
- ▶ *GemBuilder for Java Programming Guide* describes how to develop java based applications that interface with a GemStone server.
- ▶ The *Programming Guide* for the GemStone server describes GemStone and the GemStone Smalltalk language.
- ▶ If you will be acting as a system administrator, or developing software for someone else who must play this role, you should read the *System Administration Guide* for the GemStone server.

### Terminology Conventions

The term “GemStone” is used to refer to the server products GemStone/S 64 Bit and GemStone/S, and the GemStone family of products; the GemStone Smalltalk programming language; and may also be used to refer to the company, now GemTalk Systems, previously GemStone Systems, Inc. and a division of VMware, Inc.

## Technical Support

### Support Website

**<http://gemtalksystems.com/techsupport>**

GemTalk's Technical Support website provides a variety of resources to help you use GemTalk products:

- ▶ **Documentation** for released versions of GemTalk products, in PDF form.
- ▶ **Downloads**, including current and recent versions of GemTalk products.
- ▶ **Bugnotes**, identifying performance issues or error conditions.
- ▶ **TechTips**, providing information and instructions that are not in the documentation.
- ▶ **Compatibility matrices**, listing supported platforms for GemTalk product versions.

This material is updated regularly; we recommend checking this site on a regular basis.

### Help Requests

You may need to contact Technical Support directly, if your questions are not answered in the documentation or by other material on the Technical Support site. Technical Support is available to customers with current support contracts.

Requests for technical assistance may be submitted online, by email, or by telephone.

**Website:** <http://techsupport.gemtalksystems.com>

**Email:** [techsupport@gemtalksystems.com](mailto:techsupport@gemtalksystems.com)

**Telephone:** (800) 243-4772 or (503) 766-4702

When submitting a request, please include the following information:

- ▶ Your name and company name.
- ▶ The versions of GemBuilder for Java, JDK, and of all related GemTalk products, and of any other related products, and the operating system and version you are using.
- ▶ A description of the problem or request.
- ▶ Exact error message(s) received, if any, including log files if appropriate.

Technical Support is available from 8am to 5pm Pacific Time, Monday through Friday, excluding GemTalk holidays.

### 24x7 Emergency Technical Support

GemTalk offers, at an additional charge, 24x7 emergency technical support. This support entitles customers to contact us 24 hours a day, 7 days a week, 365 days a year, for issues impacting a production system. For more details, contact GemTalk Support Renewals.

## Training and Consulting

GemTalk Professional Services provide consulting to help you succeed with GemStone products. Training for GemStone/S is available at your location, and training courses are offered periodically at our offices in Beaverton, Oregon. Contact GemTalk Professional Services for more details or to obtain consulting services.

***Chapter 1. Installing GemBuilder for Java***

System Requirements . . . . . 7

Installing GemBuilder for Java into the GemStone Server. . . . . 8

    Prepare for Installation. . . . . 8

    Environment Setup. . . . . 9

    Installing GemBuilder for Java into your Repository. . . . . 10

Client Setup. . . . . 10

    Preliminaries . . . . . 10

    Copy GBJ files to the client . . . . . 11

    Environment variables. . . . . 12

    Start up the GBJ Launcher and log into GemStone . . . . . 13



# *Installing GemBuilder for Java*

---

This Installation Guide describes how to install GemBuilder for Java (GBJ) into a GemStone/S 64 Bit Repository, and how to configure Java clients to log in to the GemStone Repository using GBJ.

This version of GemBuilder for Java supports GemStone/S 64 Bit v3.2 and later only.

For details on the changes in this version of GBJ, see the *GemBuilder for Java Release Notes* for version 3.1.1.

The GemBuilder for Java installation process includes installing the GBJ interface files into the GemStone repository, and configuring your system to allow a GBJ Java application to log into GemStone. You need only install the GBJ interface files into the server once for each release of GBJ, but each Java client must be configured for login.

## **System Requirements**

### **GemStone Server Product and Platform**

A supported GemStone object server version, installed on a network-accessible host. GemBuilder for Java version 3.1.1 is supported with GemStone/S 64 Bit version 3.2 and later only.

Supported platforms for the GemStone/S 64 Bit version 3.2 are provided in the *GemStone/S 64 Bit version 3.2 Installation Guide*.

### **Server keyfile**

With GemStone/S 64 Bit v3.2 and GemBuilder for Java 3.1.1, authorization for using GBJ is now provided by the GS/64 keyfile. Your GemStone server must be started using a keyfile that provides authorization for GBJ in order to use GBJ. New keyfiles are required for v3.2. If you are licensed to use GBJ, you should receive a keyfile with the appropriate authorization. Contact GemStone Technical Support, or write to [keyfiles@gemtalksystem.com](mailto:keyfiles@gemtalksystem.com), if you have issues or questions.

## Operating System

You may run GBJ clients on a platform other than the GemStone server platform, provided you use the appropriate client libraries for your GemStone server version and the client platform.

GemBuilder for Java version 3.1.1 is tested and supported on the following platforms, for the specified GemStone/S 64 Bit server version:

GemStone/S 64 Bit 3.2
<ul style="list-style-type: none"><li>▶ Solaris 10 and 11 on SPARC</li><li>▶ Solaris 10 on x86</li><li>▶ AIX 6.1 and AIX 7.1</li><li>▶ Red Hat Linux ES 6.1 on x86</li><li>▶ Ubuntu 10.04 on x86</li><li>▶ Mac OSX 10.6.4 with Darwin 10.4.0 on x86</li></ul>

## Java JDK

- ▶ A Java development environment. This release was built and tested with Java Development Kit (JDK) version 1.7.0\_51. Later versions of the JDK are expected to work.

## Installing GemBuilder for Java into the GemStone Server

The following instructions describe installing the GemBuilder for Java Smalltalk code into your GemStone/S 64 Bit repository. Once the GemBuilder for Java code is installed, you will configure your client machines to log in to this repository.

If you are upgrading from an older version of GemBuilder for Java, follow this process to install version 3.1.1.

### Prepare for Installation

1. Select an installation directory, *installdir*, and make this directory the current working directory.

You can install GemBuilder for Java in any directory. We recommend installing GBJ at the same level as the GemStone server installation directory. You will need about 6 MB of free disk space.

2. GemBuilder for Java is provided as a zipped archive file, `GemBuilderJava3.1.1.zip`. Move this distribution file to the directory location in which GemBuilder for Java will be installed.
3. Unzip the distribution file using `unzip`.

*InstallDir* now contains a GemStone directory with a name similar to `GemBuilderJava3.1.1`. In the instructions that follow, we refer to this directory as *gbj\_directory*.

*gbj\_directory* includes the following:



```
version.txt
README.txt
PACKING.txt - list of file contents
gbj311.jar - the Java class library
gbjopensrc311.jar - class library containing open source libraries
GbjTest.zip - example Android application
README.android.txt - readme for Android application
doc - directory containing GemBuilder for Java javadocs documentation:
  index.html - the entry point for the online javadocs documentation
  api - directory containing support files for the online javadocs documentation.
  copyinfo.html - intellectual property ownership information
  GemStone-License.pdf - license agreement, if not covered by a specific license.
  open_source_licenses.txt - licenses for open-source components.
  sources.html - Further information and GemStone Technical Support
server - directory containing:
  GbjFileinReader.gs
  GbjGciForwarder.gs
  GbjGciInterface.gs
  GbjHypericServerTemplate.xml
  GbjHypericServiceTemplate.xml
  GbjJmxCommandsTemplate.dat
  GbjJmxSystemStatsTemplate.dat
  GbjToolsInterface.gs
  install.gs
```

## Environment Setup

GemBuilder for Java version 3.1.1 requires several environment variables to be set prior to installation, including the path.

1. The GEMSTONE environment variable, \$GEMSTONE, should be set to the GemStone server installation directory. This is described in the GemStone server documentation. To verify that this is set correctly, use the echo command.

For example, on a platform running Linux:

```
% echo $GEMSTONE
/users/GemStone64Bit3.2.0-x86_64.Linux
```

2. Your path should include the path for the Gemstone Server executables, \$GEMSTONE/bin.
3. \$GBJ should be set to the GemBuilder for Java installation directory.

C shell:

```
% setenv GBJ gbj_directory
```

Bash, Bourne or Korn shell:

```
$ GBJ=gbj_directory
$ export GBJ
```

## Installing GemBuilder for Java into your Repository

1. If necessary, start up the GemStone repository monitor (Stone). You may also want to start a NetLDI for use later in testing the GBJ installation.
2. At a command prompt, **cd** to a working directory, in which you want the installation log to be created. You must have write permission for this directory.
3. Log in to the GemStone server as SystemUser, using linked Topaz. Use the **-i** switch, which keeps Topaz from reading any initialization file you might have. For instance:

```
prompt> topaz -i -l
topaz> set gemstone gs64stone
topaz> set user SystemUser password swordfish
topaz> login
successful login
```

4. File in the server component, which is located in the server directory of the GemBuilder for Java installation tree.

For example:

```
topaz 1> input $GBJ/server/install.gs
```

During the file-in operation, output is directed to the file `Gbj311ServerFilein.log` in the current directory.

The file-in operation should end with a message that the errorcount is 0. If errorcount is not 0, errors have occurred; contact GemStone Technical Support, providing the file `Gbj311ServerFilein.log` as well as details about the installation process.

5. Exit Topaz:

```
topaz 1> quit
```

Your GemStone server is now ready for use by GemBuilder for Java clients.

## Client Setup

### Preliminaries

1. Verify that TCP/IP networking software is up and running on your client machine, and that there is a network path to the Stone's host.

For example:

**Solaris:**

```
% /usr/sbin/ping hostname 1 1
```

**AIX:**

```
% /etc/ping hostname 8 1
```

**Linux:**

```
% /bin/ping -c 1 hostname
```

**Darwin/Mac:**

```
% /sbin/ping -c 1 hostname
```

where *hostname* is the name of your node or the Stone host. If ping responds with statistics or "*hostname is alive,*" you have verified that TCP/IP is functional.

**Copy GBJ files to the client**

If you are running the GBJ client on the same machine as the GemStone server, you can set your CLASSPATH and PATH or LD\_LIBRARY\_PATH to existing GBJ and server installation directories. However, if you are running the GBJ client on a separate machine, you will need to set up the client machine with the correct files.

1. Get the required GBJ jar files

If you are running the GBJ client on the same machine as the server, use the existing location configured in \$GBJ.

If the GBJ client is on a different machine, install the GBJ distribution on the client. You may install these from the distribution archive as was done on the server, as described on page 8. You may also copy these files from the server installation.

The required files from the GBJ distribution are the jar files, `gbj311.jar` and `gbjopensrc311.jar`. However, the javadocs provide key documentation for GBJ functions and should also be copied to the client.

The directory containing the GBJ jar files accessible to the client will be referred to as *gbj\_jar\_dir*.

2. Get the correct GBJ and GCI client shared libraries

The GBJ clients require access to both the GCI shared libraries and the GBJ shared library. All these shared libraries are specific to the server product and version and to the client platform.

The GBJ shared libraries are also specific to the version of GBJ. They have a name of the form:

```
libgbjgciGbjVersion-ServerVersion-64.extension
```

To indicate the GBJ and GemStone/S 64 Bit version numbers.

If you are running the GBJ client from a machine other than the GemStone server machine, copy the GCI client libraries to a location accessible from the client machine. If this is a different platform than the one the GemStone server is running on, you may need to use the GemStone server distribution for a platform other than your server platform to locate the correct libraries. Contact GemStone Technical Support if you cannot locate the correct client libraries.

The client libraries are located in the directory `$GEMSTONE/lib` on UNIX or Linux. The following files are required:

```
libgbjgci311-3.2.0-64.so  
libgcirpc3.2.0-64.so  
libssl-3.2.0-64.so
```

There are also linked versions of the GCI client libraries, which you may use in custom GBJ applications. The GBJ tools support only RPC logins.

Note that only 64-bit applications are supported with GBJ.

The directory containing the server GBJ and GCI shared library files will be referred to as *shared\_library\_dir*.

## Environment variables

1. The CLASSPATH environment variable must include the GBJ Tools class library, `gbj311.jar`, and the open source library `gbjopencrc30.jar`. These must be in a directory accessible from the client, as described above in “Get the required GBJ jar files” on page 11.

To set the CLASSPATH on UNIX or Linux:

C shell:

```
% setenv CLASSPATH
$JDK/lib:gbj_jar_dir/gbj311.jar:gbj_jar_dir/gbjopencrc311.jar
```

Bash, Bourne or Korn shell:

```
$ CLASSPATH=
$JDK/lib:gbj_jar_dir/gbj311.jar:gbj_jar_dir/gbjopencrc311.jar
$ export CLASSPATH
```

2. Set the shared library path environment variable to include the client library directory, *shared\_library\_dir*, as described above in “Get the correct GBJ and GCI client shared libraries” on page 11.

On UNIX and Linux, the LD\_LIBRARY\_PATH environment variable must include the directories containing the GCI and GBJ shared libraries. For example:

C shell:

```
% setenv LD_LIBRARY_PATH shared_library_dir/lib
```

Bash, Bourne or Korn shell:

```
$ LD_LIBRARY_PATH=shared_library_dir/lib
$ export LD_LIBRARY_PATH
```

3. If you have not already done so, add the Java executable directory to the path. To use the GBJ tools, you must have the Java executable directory, such as the JDK bin directory, on your path.

To set this on UNIX or Linux, for example

C shell:

```
% set path=($JDK/bin $path)
```

Bash, Bourne or Korn shell:

```
$ PATH=$JDK/bin:$PATH
$ export PATH
```

## Start up the GBJ Launcher and log into GemStone

1. Invoke the GBJ Tools Launcher, `com.gemstone.tools.GbjLauncher`.

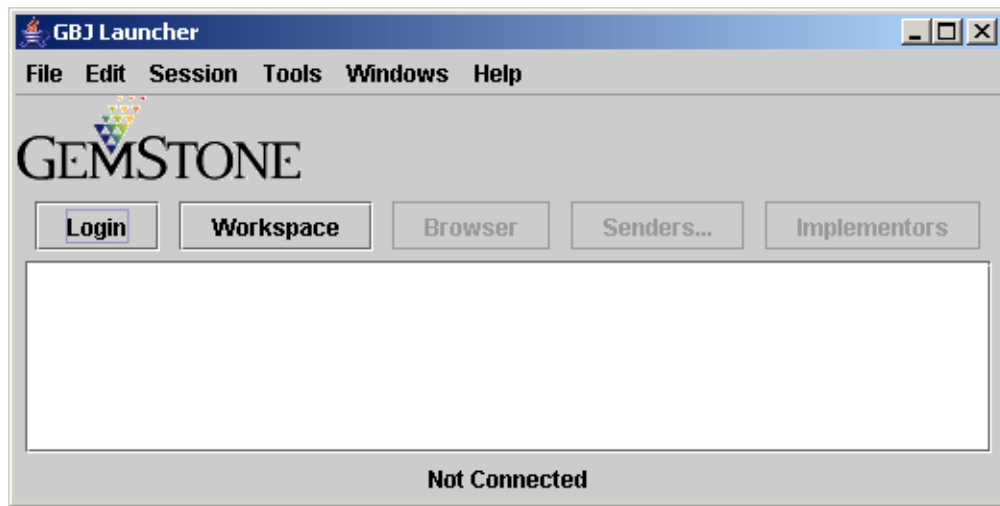
This tool supports the following options on the command line:

- ▶ `help` – print a help message (to standard output)
- ▶ `version` – print GBJ version information
- ▶ `UseLogFile filename` – write log output to the specified file
- ▶ `NoFileLogger` – send log output to standard output rather than to a file
- ▶ `UsePrefFile filename` – use the specified file for the preferences file
- ▶ `NoPrefFile` – do not load or save a preferences file

To invoke the GBJ Tools Launcher:

```
prompt> java -d64 com.gemstone.tools.GbjLauncher [options]
```

This opens the GBJ Tools Launcher



To log in to GemStone, you must have a GemStone server and NetLDI running on the GemStone server machines.

- In the Tools Launcher, click **Login** to begin a session. A Session Parameters Dialog appears, prompting you for the session parameters.

- Fill in the session parameters, as described in Table 2. When you're done, click **Ok**.

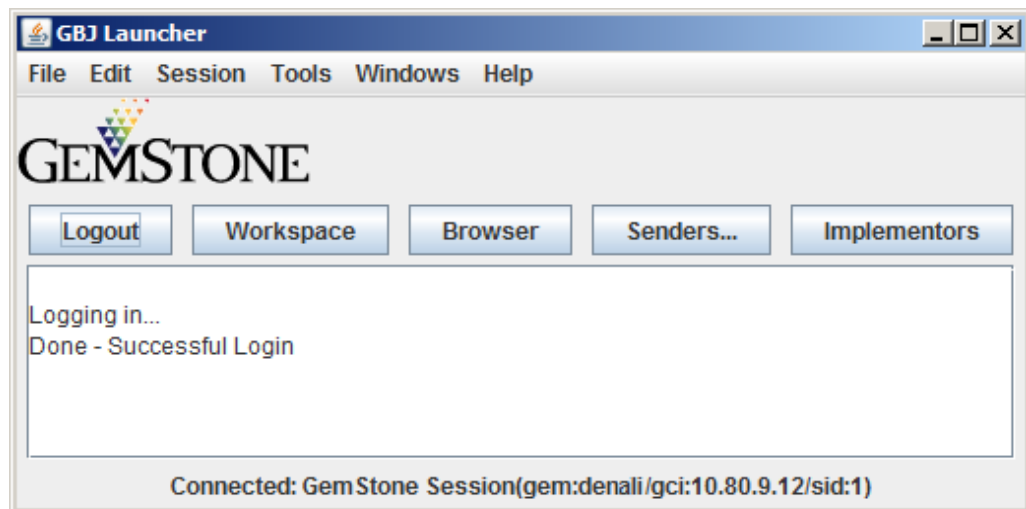
**Table 2 Session Parameters**

Parameter	Description
<b>GemStone Server</b>	(Required.) The name of the Stone process. For a Stone running on a remote server, be sure to include the server's hostname in Network Resource String (NRS) format. For example, for a Stone process called 'gs64stone' running on node 'handel', you would specify this NRS string:  !@handel!gs64stone  For more information on Network Resource Strings, see the <i>System Administration Guide</i> for your GemStone server.
<b>GemStone User</b>	(Required.) Your GemStone username, such as DataCurator.
<b>GemStone Password</b>	(Required.) Your GemStone password.
<b>Gem Service</b>	The default is <b>gemnetobject</b> , which is not shown; if you are running with the default NetLDI on the same machine as the Stone, you may leave this unchanged.  Otherwise, include the appropriate information in NRS format. For example, with the Stone example above, you would specify this NRS string for the Gem Service:  !@handel!gemnetobject

Table 2 Session Parameters (continued)

Parameter	Description
<b>Host User</b>	The username for your account on this machine. Host authentication may be omitted if you are using another method of network authentication. See the <i>System Administration Guide</i> for your GemStone server for more information on the options.
<b>Host Password</b>	The password for your unix account.
<b>Transaction Mode</b>	One of the following: <b>Auto</b> – Places your session in a GemStone transaction and starts a new one each time you commit or abort. <b>Manual</b> – You must explicitly begin transactions before making changes that you want to commit.

- A successful login results in the event being recorded in the Launcher's Text Pane, which serves as a transcript. Additional buttons are activated, and the **Login** button becomes **Logout**.



After you have successfully logged in to the GemStone server, you have verified that your GemBuilder installation is correct. To end the session, click **Logout**. To close the launcher, choose **File > Exit**.

If the login attempt did not succeed, examine the error message to determine the reason. To change your session parameter settings and try again, click **Login**.

For more information on login parameters, see the *GemBuilder for Java Programming Guide* and the *GemBuilder for Java Tools Guide*.

The *GemBuilder for Java Tools Guide* provides more information on using the GBJ tools available from the GBJ Launcher.